

## Product datasheet for TA337412

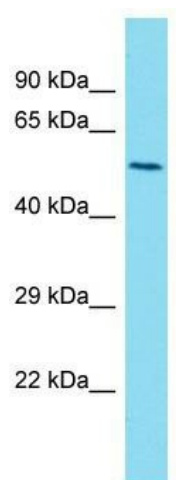
### LMAN1L Rabbit Polyclonal Antibody

#### Product data:

Product Type:	Primary Antibodies
Applications:	WB
Recommended Dilution:	WB
Reactivity:	Human
Host:	Rabbit
Isotype:	IgG
Clonality:	Polyclonal
Immunogen:	The immunogen for Anti-LMAN1L antibody is: synthetic peptide directed towards the C-terminal region of Human LMAN1L. Synthetic peptide located within the following region: GLSKQLAQAERQWKKQLGPPGQARPDGGWALDASCQIPSTPGRGGHLSMS
Formulation:	Liquid. Purified antibody supplied in 1x PBS buffer with 0.09% (w/v) sodium azide and 2% sucrose.
Purification:	Affinity Purified
Conjugation:	Unconjugated
Storage:	Store at -20°C as received.
Stability:	Stable for 12 months from date of receipt.
Predicted Protein Size:	54 kDa
Gene Name:	lectin, mannose binding 1 like
Database Link:	<a href="#">NP_068591</a> <a href="#">Entrez Gene 79748 Human</a> <a href="#">Q9HAT1</a>
Background:	The function of this protein remains unknown.
Synonyms:	ERGIC-53L; ERGL
Note:	Immunogen Sequence Homology: Human: 100%; Horse: 92%; Rabbit: 77%

[View online »](#)

## Product images:



Host: Rabbit; Target Name: LMAN1L; Sample  
Tissue: U937 Whole Cell lysates; Antibody  
Dilution: 1.0 ug/ml