

## Product datasheet for **TA337410**

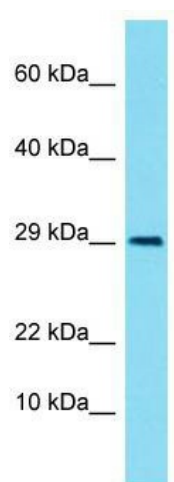
### LIMS3 Rabbit Polyclonal Antibody

#### Product data:

Product Type:	Primary Antibodies
Applications:	WB
Recommended Dilution:	WB
Reactivity:	Human
Host:	Rabbit
Isotype:	IgG
Clonality:	Polyclonal
Immunogen:	The immunogen for Anti-LIMS3 antibody is: synthetic peptide directed towards the N-terminal region of Human LIMS3. Synthetic peptide located within the following region: RAALNTVHEANGTEDERAVSKLQRRHSDVKVYKEFCDFYAKFNMANALAS
Formulation:	Liquid. Purified antibody supplied in 1x PBS buffer with 0.09% (w/v) sodium azide and 2% sucrose.
Purification:	Affinity Purified
Conjugation:	Unconjugated
Storage:	Store at -20°C as received.
Stability:	Stable for 12 months from date of receipt.
Predicted Protein Size:	27 kDa
Gene Name:	LIM zinc finger domain containing 3
Database Link:	<a href="#">NP_277049</a> <a href="#">Entrez Gene 96626 Human</a> <a href="#">P0CW19</a>
Background:	The function of this protein remains unknown.
Synonyms:	PINCH-3
Note:	Immunogen Sequence Homology: Human: 100%; Rat: 92%; Mouse: 92%; Dog: 86%; Horse: 86%

[View online »](#)

## Product images:



Host: Rabbit; Target Name: LIMS3; Sample  
Tissue: Fetal Kidney lysates; Antibody Dilution: 1.0  
ug/ml