

Product datasheet for TA337408

LGALS9C Rabbit Polyclonal Antibody

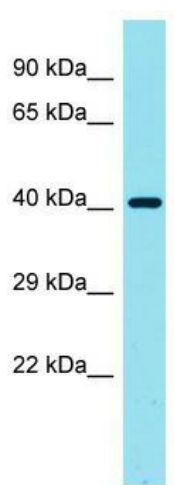
Product data:

Product Type:	Primary Antibodies
Applications:	WB
Recommended Dilution:	WB
Reactivity:	Human
Host:	Rabbit
Isotype:	IgG
Clonality:	Polyclonal
Immunogen:	The immunogen for Anti-LGALS9C antibody is: synthetic peptide directed towards the C-terminal region of Human LGALS9C. Synthetic peptide located within the following region: RFDENAVVRNTQINNSWGSEERSLPRKMPFVRGQSFSVWILCEAHCLKVA
Formulation:	Liquid. Purified antibody supplied in 1x PBS buffer with 0.09% (w/v) sodium azide and 2% sucrose.
Purification:	Affinity Purified
Conjugation:	Unconjugated
Storage:	Store at -20°C as received.
Stability:	Stable for 12 months from date of receipt.
Predicted Protein Size:	39 kDa
Gene Name:	galectin 9C
Database Link:	NP_001035167 Entrez Gene 654346 Human Q6DKI2
Background:	This gene was initially thought to represent a pseudogene of galectin 9; however, this transcript has good exon-intron structure and encodes a predicted protein of the same size as and highly similar to galectin 9. This gene is one of two similar loci on chromosome 17p similar to galectin 9 and now thought to be protein-encoding. This gene is the more telomeric gene.
Synonyms:	MGC125972


[View online »](#)

Note: Immunogen Sequence Homology: Dog: 100%; Pig: 100%; Rat: 100%; Human: 100%; Guinea pig: 100%; Bovine: 92%; Mouse: 91%; Rabbit: 91%

Product images:



Host: Rabbit; Target Name: LGALS9C; Sample Tissue: HeLa Whole Cell lysates; Antibody Dilution: 1.0 ug/ml