

Product datasheet for **TA337402**

KRT78 Rabbit Polyclonal Antibody

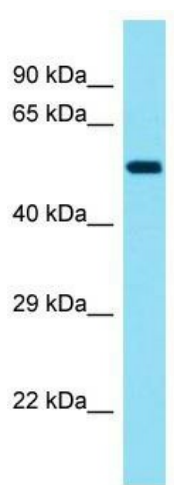
Product data:

Product Type:	Primary Antibodies
Applications:	WB
Recommended Dilution:	WB
Reactivity:	Human
Host:	Rabbit
Isotype:	IgG
Clonality:	Polyclonal
Immunogen:	The immunogen for Anti-KRT78 antibody is: synthetic peptide directed towards the middle region of Human KRT78. Synthetic peptide located within the following region: CRDQEEYKSKYEEEAHRRATLENDFVVLKKDVGFLSKMELEGKLEAL
Formulation:	Liquid. Purified antibody supplied in 1x PBS buffer with 0.09% (w/v) sodium azide and 2% sucrose.
Purification:	Affinity Purified
Conjugation:	Unconjugated
Storage:	Store at -20°C as received.
Stability:	Stable for 12 months from date of receipt.
Predicted Protein Size:	57 kDa
Gene Name:	keratin 78
Database Link:	NP_775487 Entrez Gene 196374 Human Q8N1N4
Background:	This gene is a member of the type II keratin gene family and encodes a protein with an intermediate filament domain. Keratins are the major structural proteins in epithelial cells, forming a cytoplasmic network of 10 to 12 nm wide intermediate filaments and creating a scaffold that gives cells the ability to withstand mechanical and non-mechanical stresses. The genes of the type II keratin family are located as a gene cluster at 12p13.13. Four pseudogenes of this gene family have been identified.
Synonyms:	CK-78; K5B; K78; Kb40


[View online »](#)

Note: Immunogen Sequence Homology: Human: 100%; Rabbit: 92%; Pig: 90%; Dog: 85%; Bovine: 83%; Rat: 80%; Mouse: 80%; Guinea pig: 80%

Product images:



Host: Rabbit; Target Name: KRT78; Sample Tissue: HepG2 Whole Cell lysates; Antibody Dilution: 1.0 ug/ml