

Product datasheet for **TA337401**

Cytokeratin 2 (KRT76) Rabbit Polyclonal Antibody

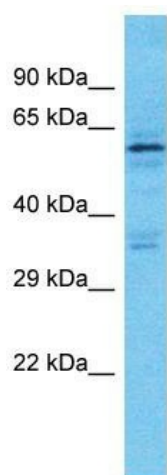
Product data:

Product Type:	Primary Antibodies
Applications:	WB
Recommended Dilution:	WB
Reactivity:	Human
Host:	Rabbit
Isotype:	IgG
Clonality:	Polyclonal
Immunogen:	The immunogen for Anti-KRT76 antibody is: synthetic peptide directed towards the C-terminal region of Human KRT76. Synthetic peptide located within the following region: GSISVSHSGMGSSSGSIQTSGGGYKSGGGGSTSIRFSQTTSSSQHSSTK
Formulation:	Liquid. Purified antibody supplied in 1x PBS buffer with 0.09% (w/v) sodium azide and 2% sucrose. <i>Note that this product is shipped as lyophilized powder to China customers.</i>
Purification:	Affinity Purified
Conjugation:	Unconjugated
Storage:	Store at -20°C as received.
Stability:	Stable for 12 months from date of receipt.
Predicted Protein Size:	65 kDa
Gene Name:	keratin 76
Database Link:	NP_056932 Entrez Gene 51350 Human Q01546
Background:	Keratins are intermediate filament proteins responsible for the structural integrity of epithelial cells and are subdivided into epithelial keratins and hair keratins. The type II keratins are clustered in a region of chromosome 12q13.
Synonyms:	HUMCYT2A; KRT2B; KRT2P
Note:	Immunogen Sequence Homology: Horse: 100%; Human: 100%; Dog: 92%; Rat: 83%; Mouse: 83%



[View online »](#)

Product images:



Host: Rabbit

Target Name: KRT76

Sample Tissue: Hela Cell Lysate

Antibody Dilution: 1.0 μ g/ml

Host: Rabbit; Target Name: KRT76; Sample Tissue: Hela Whole Cell lysates; Antibody Dilution: 1.0 ug/ml