

Product datasheet for **TA337399**

Keratin 39 (KRT39) Rabbit Polyclonal Antibody

Product data:

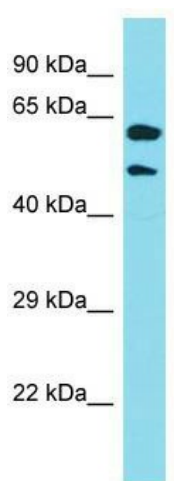
Product Type:	Primary Antibodies
Applications:	WB
Recommended Dilution:	WB
Reactivity:	Human
Host:	Rabbit
Isotype:	IgG
Clonality:	Polyclonal
Immunogen:	The immunogen for Anti-KRT39 antibody is: synthetic peptide directed towards the N-terminal region of Human KRT39. Synthetic peptide located within the following region: NFNARFSLDDCSWYGEGINSNEKETMQLNERLANYLQKVRMLERENAEL
Formulation:	Liquid. Purified antibody supplied in 1x PBS buffer with 0.09% (w/v) sodium azide and 2% sucrose. <i>Note that this product is shipped as lyophilized powder to China customers.</i>
Purification:	Affinity Purified
Conjugation:	Unconjugated
Storage:	Store at -20°C as received.
Stability:	Stable for 12 months from date of receipt.
Predicted Protein Size:	55 kDa
Gene Name:	keratin 39
Database Link:	NP_998821 Entrez Gene 390792 Human Q6A163
Background:	This gene encodes a member of the type I (acidic) keratin family, which belongs to the superfamily of intermediate filament (IF) proteins. Keratins are heteropolymeric structural proteins which form the intermediate filament. These filaments, along with actin microfilaments and microtubules, compose the cytoskeleton of epithelial cells. The type I keratin genes are clustered in a region of chromosome 17q12-q21.
Synonyms:	CK-39; K39; KA35



[View online »](#)

Note: Immunogen Sequence Homology: Dog: 100%; Horse: 100%; Human: 100%; Sheep: 100%; Bovine: 100%; Rabbit: 100%; Pig: 92%; Guinea pig: 92%; Rat: 85%; Mouse: 85%

Product images:



Host: Rabbit; Target Name: KRT39; Sample Tissue: RPMI-8226 Whole Cell lysates; Antibody Dilution: 1.0 ug/ml