

Product datasheet for **TA337398**

KRT26 Rabbit Polyclonal Antibody

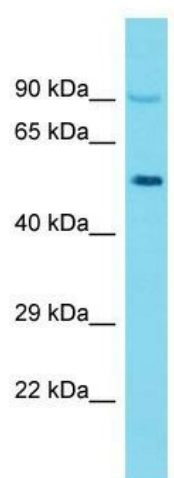
Product data:

Product Type:	Primary Antibodies
Applications:	WB
Recommended Dilution:	WB
Reactivity:	Human
Host:	Rabbit
Isotype:	IgG
Clonality:	Polyclonal
Immunogen:	The immunogen for Anti-KRT26 antibody is: synthetic peptide directed towards the C-terminal region of Human KRT26. Synthetic peptide located within the following region: IDIYCNLLDGEERKSKSTCYKSKGYRPVNSGNQAKDSTEETIVKTVVEEL
Formulation:	Liquid. Purified antibody supplied in 1x PBS buffer with 0.09% (w/v) sodium azide and 2% sucrose. <i>Note that this product is shipped as lyophilized powder to China customers.</i>
Purification:	Affinity Purified
Conjugation:	Unconjugated
Storage:	Store at -20°C as received.
Stability:	Stable for 12 months from date of receipt.
Predicted Protein Size:	52 kDa
Gene Name:	keratin 26
Database Link:	NP_853517 Entrez Gene 353288 Human Q7Z3Y9
Background:	The protein encoded by this gene is a member of the keratin superfamily. This keratin protein is a type I keratin that is specific for the inner root sheath of the hair follicle. This gene exists in a cluster with other keratin genes on chromosome 17q21.
Synonyms:	CK26; K25; K25IRS2; K26; KRT25B
Note:	Immunogen Sequence Homology: Human: 100%; Rabbit: 77%



[View online »](#)

Product images:



Host: Rabbit; Target Name: KRT26; Sample
Tissue: PANC1 Whole Cell lysates; Antibody
Dilution: 1.0 ug/ml