

Product datasheet for **TA337396**

KLHL33 Rabbit Polyclonal Antibody

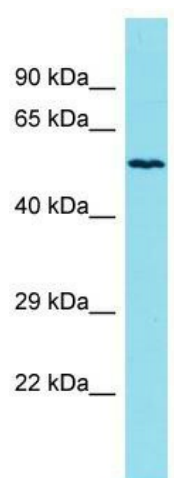
Product data:

Product Type:	Primary Antibodies
Applications:	WB
Recommended Dilution:	WB
Reactivity:	Human
Host:	Rabbit
Isotype:	IgG
Clonality:	Polyclonal
Immunogen:	The immunogen for Anti-KLHL33 antibody is: synthetic peptide directed towards the N-terminal region of Human KLHL33. Synthetic peptide located within the following region: VRFGRMSTRELRVRAAGLLPPLTPDLLHQLMVEADVPGQERRREPDRAL
Formulation:	Liquid. Purified antibody supplied in 1x PBS buffer with 0.09% (w/v) sodium azide and 2% sucrose. <i>Note that this product is shipped as lyophilized powder to China customers.</i>
Purification:	Affinity Purified
Conjugation:	Unconjugated
Storage:	Store at -20°C as received.
Stability:	Stable for 12 months from date of receipt.
Predicted Protein Size:	57 kDa
Gene Name:	kelch like family member 33
Database Link:	NP_001103467 Entrez Gene 123103 Human A6NCF5
Background:	The function of this protein remains unknown.
Synonyms:	KLHL33
Note:	Immunogen Sequence Homology: Human: 100%; Horse: 93%; Bovine: 93%; Rat: 92%; Mouse: 92%; Pig: 86%; Guinea pig: 85%; Rabbit: 77%



[View online »](#)

Product images:



Host: Rabbit; Target Name: KLHL33; Sample
Tissue: HepG2 Whole Cell lysates; Antibody
Dilution: 1.0 ug/ml