

Product datasheet for **TA337395**

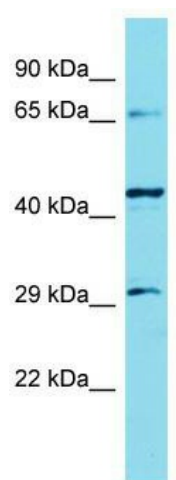
KLHL30 Rabbit Polyclonal Antibody

Product data:

Product Type:	Primary Antibodies
Applications:	WB
Recommended Dilution:	WB
Reactivity:	Human
Host:	Rabbit
Isotype:	IgG
Clonality:	Polyclonal
Immunogen:	The immunogen for Anti-KLHL30 antibody is: synthetic peptide directed towards the C-terminal region of Human KLHL30. Synthetic peptide located within the following region: YHVEMEAYDTRDTWTRHGALPRLWLYHGASTVFLDVSKWTQPSGPTQEH
Formulation:	Liquid. Purified antibody supplied in 1x PBS buffer with 0.09% (w/v) sodium azide and 2% sucrose.
Purification:	Affinity Purified
Conjugation:	Unconjugated
Storage:	Store at -20°C as received.
Stability:	Stable for 12 months from date of receipt.
Predicted Protein Size:	63 kDa
Gene Name:	kelch like family member 30
Database Link:	NP_940984 Entrez Gene 377007 Human Q0D2K2
Background:	The function of this protein remains unknown.
Synonyms:	FLJ43374
Note:	Immunogen Sequence Homology: Human: 100%; Pig: 85%; Dog: 79%; Mouse: 75%



[View online »](#)

Product images:

Host: Rabbit; Target Name: KLHL30; Sample
Tissue: HeLa Whole Cell lysates; Antibody Dilution:
1.0 ug/ml