

Product datasheet for **TA337394**

KLC4 Rabbit Polyclonal Antibody

Product data:

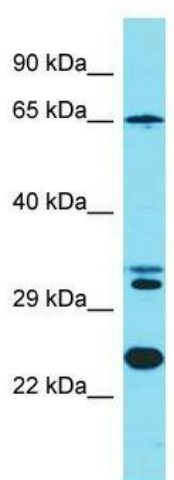
Product Type:	Primary Antibodies
Applications:	WB
Recommended Dilution:	WB
Reactivity:	Human
Host:	Rabbit
Isotype:	IgG
Clonality:	Polyclonal
Immunogen:	The immunogen for Anti-KLC4 antibody is: synthetic peptide directed towards the N-terminal region of Human KLC4. Synthetic peptide located within the following region: GLVHEKARQLRRSMENIELGLSEAQVMLALASHLSTVESEKQKLRAQVRR
Formulation:	Liquid. Purified antibody supplied in 1x PBS buffer with 0.09% (w/v) sodium azide and 2% sucrose. <i>Note that this product is shipped as lyophilized powder to China customers.</i>
Purification:	Affinity Purified
Conjugation:	Unconjugated
Storage:	Store at -20°C as received.
Stability:	Stable for 12 months from date of receipt.
Predicted Protein Size:	69 kDa
Gene Name:	kinesin light chain 4
Database Link:	NP_958929 Entrez Gene 89953 Human Q9NSK0
Background:	Kinesin is a microtubule-associated force-producing protein that may play a role in organelle transport. The light chain may function in coupling of cargo to the heavy chain or in the modulation of its ATPase activity.
Synonyms:	bA387M24.3; KNSL8
Note:	Immunogen Sequence Homology: Dog: 100%; Pig: 100%; Rat: 100%; Horse: 100%; Human: 100%; Mouse: 100%; Bovine: 100%; Rabbit: 100%; Guinea pig: 100%; Zebrafish: 92%



[View online »](#)

Protein Families: Druggable Genome

Product images:



Host: Rabbit; Target Name: KLC4; Sample Tissue: Jurkat Whole Cell lysates; Antibody Dilution: 1.0 ug/ml