

Product datasheet for **TA337388**

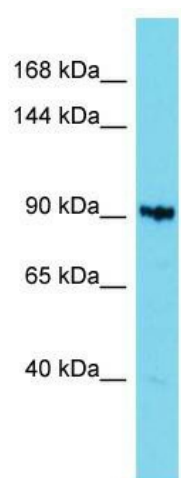
KIAA1614 Rabbit Polyclonal Antibody

Product data:

Product Type:	Primary Antibodies
Applications:	WB
Recommended Dilution:	WB
Reactivity:	Human
Host:	Rabbit
Isotype:	IgG
Clonality:	Polyclonal
Immunogen:	The immunogen for Anti-KIAA1614 antibody is: synthetic peptide directed towards the C-terminal region of Human KIAA1614. Synthetic peptide located within the following region: SKGNRSSLYL VAGPGD HSAAGRPAKTSPRRALSVEDV GAPS LARTVGR LV
Formulation:	Liquid. Purified antibody supplied in 1x PBS buffer with 0.09% (w/v) sodium azide and 2% sucrose. <i>Note that this product is shipped as lyophilized powder to China customers.</i>
Purification:	Affinity Purified
Conjugation:	Unconjugated
Storage:	Store at -20°C as received.
Stability:	Stable for 12 months from date of receipt.
Predicted Protein Size:	89 kDa
Gene Name:	KIAA1614
Database Link:	NP_066001 Entrez Gene 57710 Human Q5VZ46
Background:	The function of this protein remains unknown.
Synonyms:	RP11-46A10.3
Note:	Immunogen Sequence Homology: Human: 100%; Dog: 86%



[View online »](#)

Product images:

Host: Rabbit; Target Name: KIAA1614; Sample Tissue: 721_B Whole Cell lysates; Antibody Dilution: 1.0 ug/ml KIAA1614 is supported by BioGPS gene expression data to be expressed in 721_B