

## Product datasheet for **TA337387**

### **KIAA1539 (FAM214B) Rabbit Polyclonal Antibody**

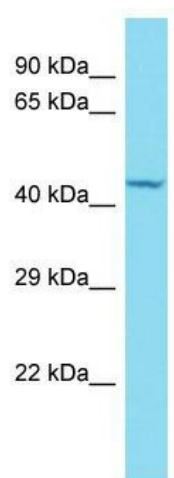
#### **Product data:**

|                                |  |
|--------------------------------|--|
| <b>Product Type:</b>           | Primary Antibodies   |
| <b>Applications:</b>           | WB   |
| <b>Recommended Dilution:</b>   | WB   |
| <b>Reactivity:</b>             | Human  |
| <b>Host:</b>                   | Rabbit   |
| <b>Isotype:</b>                | IgG  |
| <b>Clonality:</b>              | Polyclonal   |
| <b>Immunogen:</b>              | The immunogen for Anti-KIAA1539 antibody is: synthetic peptide directed towards the middle region of Human KIAA1539. Synthetic peptide located within the following region:<br>SPGTANGHSPEHTPPGPGPPGPCPTKRLLPAGEAPDVSSEEEGPAPRRR |
| <b>Formulation:</b>            | Liquid. Purified antibody supplied in 1x PBS buffer with 0.09% (w/v) sodium azide and 2% sucrose.<br><i>Note that this product is shipped as lyophilized powder to China customers.</i>  |
| <b>Purification:</b>           | Affinity Purified  |
| <b>Conjugation:</b>            | Unconjugated   |
| <b>Storage:</b>                | Store at -20°C as received.  |
| <b>Stability:</b>              | Stable for 12 months from date of receipt.   |
| <b>Predicted Protein Size:</b> | 46 kDa   |
| <b>Gene Name:</b>              | family with sequence similarity 214 member B   |
| <b>Database Link:</b>          | <a href="#">NP_079458</a><br><a href="#">Entrez Gene 80256 Human</a><br><a href="#">Q7L5A3</a>   |
| <b>Background:</b>             | The function of this protein remains unknown.  |
| <b>Synonyms:</b>               | KIAA1539   |
| <b>Note:</b>                   | Immunogen Sequence Homology: Human: 100%; Dog: 92%; Pig: 92%; Rat: 92%; Horse: 92%; Mouse: 92%; Bovine: 92%; Rabbit: 92%; Guinea pig: 92%; Yeast: 77%  |



[View online »](#)

## Product images:



Host: Rabbit; Target Name: KIAA1539; Sample  
Tissue: HeLa Whole cell lysates; Antibody Dilution:  
1.0 ug/ml