

Product datasheet for **TA337386**

KIAA1522 Rabbit Polyclonal Antibody

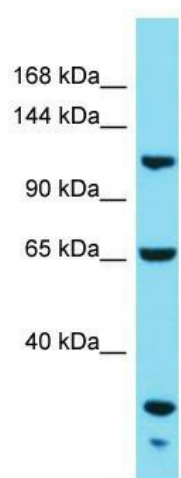
Product data:

Product Type:	Primary Antibodies
Applications:	WB
Recommended Dilution:	WB
Reactivity:	Human
Host:	Rabbit
Isotype:	IgG
Clonality:	Polyclonal
Immunogen:	The immunogen for Anti-KIAA1522 antibody is: synthetic peptide directed towards the C-terminal region of Human KIAA1522. Synthetic peptide located within the following region: KPSVGVPPPASPYPRAEPLTAPPTNGLPHTQDRTKRELAENGGVLQLVG
Formulation:	Liquid. Purified antibody supplied in 1x PBS buffer with 0.09% (w/v) sodium azide and 2% sucrose.
Purification:	Affinity Purified
Conjugation:	Unconjugated
Storage:	Store at -20°C as received.
Stability:	Stable for 12 months from date of receipt.
Predicted Protein Size:	112 kDa
Gene Name:	KIAA1522
Database Link:	NP_065939 Entrez Gene 57648 Human Q9P206
Background:	The function of this protein remains unknown.
Synonyms:	KIAA1522
Note:	Immunogen Sequence Homology: Human: 100%; Pig: 79%; Horse: 79%; Bovine: 79%; Guinea pig: 79%



[View online »](#)

Product images:



Host: Rabbit; Target Name: KIAA1522; Sample
Tissue: 721_B Whole Cell lysates; Antibody
Dilution: 1.0 ug/ml