

Product datasheet for **TA337384**

VIRMA Rabbit Polyclonal Antibody

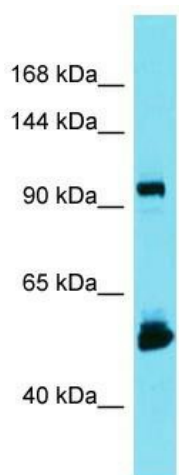
Product data:

Product Type:	Primary Antibodies
Applications:	WB
Recommended Dilution:	WB
Reactivity:	Human
Host:	Rabbit
Isotype:	IgG
Clonality:	Polyclonal
Immunogen:	The immunogen for Anti-KIAA1429 antibody is: synthetic peptide directed towards the C-terminal region of Human KIAA1429. Synthetic peptide located within the following region: FKDMRVPSALVTLHMLLCSIPLSGRDSDSEKIQNDIIDILLTFTQGVNE
Formulation:	Liquid. Purified antibody supplied in 1x PBS buffer with 0.09% (w/v) sodium azide and 2% sucrose.
Purification:	Affinity Purified
Conjugation:	Unconjugated
Storage:	Store at -20°C as received.
Stability:	Stable for 12 months from date of receipt.
Predicted Protein Size:	128 kDa
Gene Name:	KIAA1429
Database Link:	NP_892121 Entrez Gene 25962 Human Q69YN4
Background:	KIAA1429 may be involved in mRNA splicing regulation.
Synonyms:	fSAP121; MSTP054
Note:	Immunogen Sequence Homology: Dog: 100%; Pig: 100%; Rat: 100%; Horse: 100%; Human: 100%; Mouse: 100%; Bovine: 100%; Rabbit: 100%; Guinea pig: 93%



[View online »](#)

Product images:



Host: Rabbit

Target Name: KIAA1429

Sample Tissue: U937 Cell Lysate

Antibody Dilution: 1.0 μ g/ml

Host: Rabbit; Target Name: KIAA1429; Sample
Tissue: U937 Whole Cell lysates; Antibody
Dilution: 1.0 ug/ml