

## Product datasheet for **TA337383**

### ELAPOR2 Rabbit Polyclonal Antibody

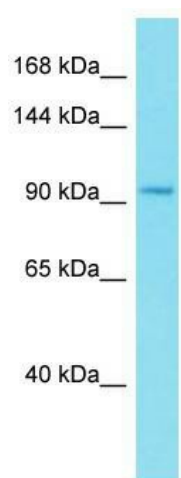
#### Product data:

|                         |  |
|-------------------------|--|
| Product Type:           | Primary Antibodies   |
| Applications:           | WB   |
| Recommended Dilution:   | WB   |
| Reactivity:             | Human  |
| Host:                   | Rabbit   |
| Isotype:                | IgG  |
| Clonality:              | Polyclonal   |
| Immunogen:              | The immunogen for Anti-KIAA1324L antibody is: synthetic peptide directed towards the N-terminal region of Human KIAA1324L. Synthetic peptide located within the following region: FSNKPGSFNCQVCPRNTYSEKGAKECIRCKDDSQFSEEGSSECTERPPCT |
| Formulation:            | Liquid. Purified antibody supplied in 1x PBS buffer with 0.09% (w/v) sodium azide and 2% sucrose.<br><i>Note that this product is shipped as lyophilized powder to China customers.</i>  |
| Purification:           | Affinity Purified  |
| Conjugation:            | Unconjugated   |
| Storage:                | Store at -20°C as received.  |
| Stability:              | Stable for 12 months from date of receipt.   |
| Predicted Protein Size: | 95 kDa   |
| Gene Name:              | KIAA1324-like  |
| Database Link:          | <a href="#">NP_689961</a><br><a href="#">Entrez Gene 222223 Human</a><br><a href="#">A8MWY0</a>  |
| Background:             | The function of this protein remains unknown.  |
| Synonyms:               | EIG121L  |
| Note:                   | Immunogen Sequence Homology: Dog: 100%; Pig: 100%; Rat: 100%; Human: 100%; Mouse: 100%; Bovine: 100%; Rabbit: 93%; Horse: 92%; Guinea pig: 86%   |
| Protein Families:       | Transmembrane  |



[View online »](#)

## Product images:



Host: Rabbit; Target Name: KIAA1324L; Sample Tissue: Placenta lysates; Antibody Dilution: 1.0 ug/ml