

Product datasheet for TA337382

KIAA1045 (PHF24) Rabbit Polyclonal Antibody

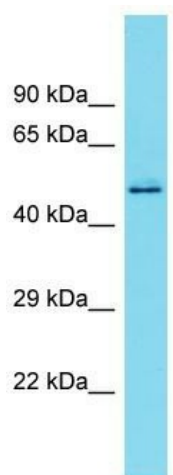
Product data:

Product Type:	Primary Antibodies
Applications:	WB
Recommended Dilution:	WB
Reactivity:	Human
Host:	Rabbit
Isotype:	IgG
Clonality:	Polyclonal
Immunogen:	The immunogen for Anti-KIAA1045 antibody is: synthetic peptide directed towards the N-terminal region of Human KIAA1045. Synthetic peptide located within the following region: RDGRGVEPEEFDRTSRFTPPAFIRPTRKLDDDKPPEICLEPREPVNDEM
Formulation:	Liquid. Purified antibody supplied in 1x PBS buffer with 0.09% (w/v) sodium azide and 2% sucrose. <i>Note that this product is shipped as lyophilized powder to China customers.</i>
Purification:	Affinity Purified
Conjugation:	Unconjugated
Storage:	Store at -20°C as received.
Stability:	Stable for 12 months from date of receipt.
Predicted Protein Size:	45 kDa
Gene Name:	PHD finger protein 24
Database Link:	NP_056112 Entrez Gene 23349 Human Q9UPV7
Background:	The function of this protein remains unknown.
Synonyms:	RP11-392A14.4
Note:	Immunogen Sequence Homology: Dog: 100%; Pig: 100%; Rat: 100%; Horse: 100%; Human: 100%; Mouse: 100%; Bovine: 100%; Rabbit: 93%; Guinea pig: 93%



[View online »](#)

Product images:



Host: Rabbit
Target Name: KIAA1045
Sample Tissue: U937 Cell Lysate
Antibody Dilution: 1.0 µg/ml

Host: Rabbit; Target Name: KIAA1045; Sample Tissue: U937 Whole Cell lysates; Antibody Dilution: 1.0 ug/ml