

Product datasheet for **TA337379**

KIAA0748 (TESPA1) Rabbit Polyclonal Antibody

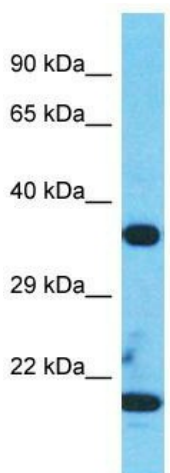
Product data:

Product Type:	Primary Antibodies
Applications:	WB
Recommended Dilution:	WB
Reactivity:	Human
Host:	Rabbit
Isotype:	IgG
Clonality:	Polyclonal
Immunogen:	The immunogen for Anti-TESPA1 antibody is: synthetic peptide directed towards the C-terminal region of Human TESPA1. Synthetic peptide located within the following region: SLPIEDPQWSTDPAQIRRELCSLPATNTETHPAKDETFWKRKSRARKSLF
Formulation:	Liquid. Purified antibody supplied in 1x PBS buffer with 0.09% (w/v) sodium azide and 2% sucrose.
Purification:	Affinity Purified
Conjugation:	Unconjugated
Storage:	Store at -20°C as received.
Stability:	Stable for 12 months from date of receipt.
Predicted Protein Size:	42 kDa
Gene Name:	thymocyte expressed, positive selection associated 1
Database Link:	NP_001092285 Entrez Gene 9840 Human A2RU30
Background:	TESPA1 is required for the development and maturation of T-cells, its function being essential for the late stages of thymocyte development. It plays a role in T-cell antigen receptor (TCR)-mediated activation of the ERK and NFAT signaling pathways, possibly by serving as a scaffolding protein that promotes the assembly of the LAT signalosome in thymocytes.
Synonyms:	HSPC257; KIAA0748
Note:	Immunogen Sequence Homology: Pig: 100%; Horse: 100%; Human: 100%; Dog: 93%; Rabbit: 86%



[View online »](#)

Product images:



Host: Rabbit

Target Name: TESPA1

Sample Tissue: Jurkat Cell Lysate

Antibody Dilution: 1.0 µg/ml

Host: Rabbit; Target Name: TESPA1; Sample
Tissue: Jurkat Whole Cell lysates; Antibody
Dilution: 1.0 ug/ml