

Product datasheet for **TA337378**

KIAA0664 (CLUH) Rabbit Polyclonal Antibody

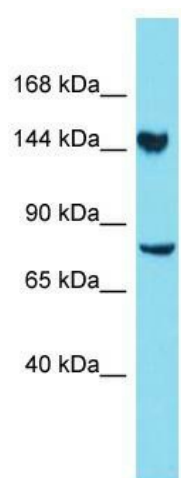
Product data:

Product Type:	Primary Antibodies
Applications:	WB
Recommended Dilution:	WB
Reactivity:	Human
Host:	Rabbit
Isotype:	IgG
Clonality:	Polyclonal
Immunogen:	The immunogen for Anti-CLUH antibody is: synthetic peptide directed towards the N-terminal region of Human CLUH. Synthetic peptide located within the following region: SVFTDGDLDGSGKRKKGLEMDPIDCTPPEYILPGSRERPLCPLQPQRDW
Formulation:	Liquid. Purified antibody supplied in 1x PBS buffer with 0.09% (w/v) sodium azide and 2% sucrose. <i>Note that this product is shipped as lyophilized powder to China customers.</i>
Purification:	Affinity Purified
Conjugation:	Unconjugated
Storage:	Store at -20°C as received.
Stability:	Stable for 12 months from date of receipt.
Predicted Protein Size:	146 kDa
Gene Name:	clustered mitochondria (cluA/CLU1) homolog
Database Link:	NP_056044 Entrez Gene 23277 Human O75153
Background:	CLUH is involved in proper cytoplasmic distribution of mitochondria.
Synonyms:	CLU1; KIAA0664
Note:	Immunogen Sequence Homology: Dog: 100%; Pig: 100%; Rat: 100%; Horse: 100%; Human: 100%; Mouse: 100%; Bovine: 100%; Guinea pig: 100%; Rabbit: 93%; Zebrafish: 83%
Protein Families:	Druggable Genome



[View online »](#)

Product images:



Host: Rabbit; Target Name: CLUH; Sample Tissue: 293T Whole Cell lysates; Antibody Dilution: 1.0 ug/ml