

Product datasheet for **TA337377**

CEP104 Rabbit Polyclonal Antibody

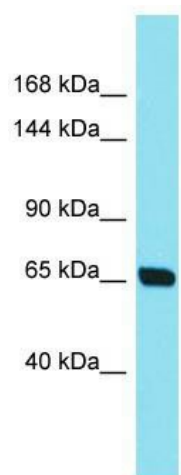
Product data:

Product Type:	Primary Antibodies
Applications:	WB
Recommended Dilution:	WB
Reactivity:	Human
Host:	Rabbit
Isotype:	IgG
Clonality:	Polyclonal
Immunogen:	The immunogen for Anti-CEP104 antibody is: synthetic peptide directed towards the N-terminal region of Human CEP104. Synthetic peptide located within the following region: SLPEYFAPYQAERFRRLGYVSLCDNEKTGCKARELKSVYVDAVGQFLKLI
Formulation:	Liquid. Purified antibody supplied in 1x PBS buffer with 0.09% (w/v) sodium azide and 2% sucrose. <i>Note that this product is shipped as lyophilized powder to China customers.</i>
Purification:	Affinity Purified
Conjugation:	Unconjugated
Storage:	Store at -20°C as received.
Stability:	Stable for 12 months from date of receipt.
Predicted Protein Size:	60 kDa
Gene Name:	centrosomal protein 104
Database Link:	NP_055519 Entrez Gene 9731 Human O60308
Background:	The function of this protein remains unknown.
Synonyms:	CFAP256; GlyBP; JBTS25; KIAA0562; ROC22
Note:	Immunogen Sequence Homology: Dog: 100%; Pig: 100%; Rat: 100%; Horse: 100%; Human: 100%; Mouse: 100%; Bovine: 100%; Rabbit: 100%; Guinea pig: 100%; Zebrafish: 86%



[View online »](#)

Product images:



Host: Rabbit; Target Name: CEP104; Sample Tissue: 721_B Whole Cell lysates; Antibody Dilution: 1.0 ug/ml CEP104 is supported by BioGPS gene expression data to be expressed in 721_B