

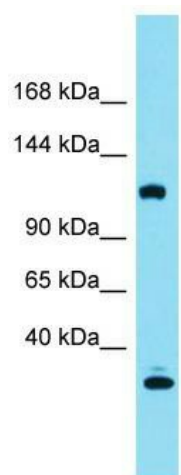
Product datasheet for **TA337376**

GARRE1 Rabbit Polyclonal Antibody

Product data:

Product Type:	Primary Antibodies
Applications:	WB
Recommended Dilution:	WB
Reactivity:	Human
Host:	Rabbit
Isotype:	IgG
Clonality:	Polyclonal
Immunogen:	The immunogen for Anti-KIAA0355 antibody is: synthetic peptide directed towards the C-terminal region of Human KIAA0355. Synthetic peptide located within the following region: DSASSDETSSANGDSLFSMFSGPDLVAAVKQRRKHSSGEQDTSTLPSP
Formulation:	Liquid. Purified antibody supplied in 1x PBS buffer with 0.09% (w/v) sodium azide and 2% sucrose.
Purification:	Affinity Purified
Conjugation:	Unconjugated
Storage:	Store at -20°C as received.
Stability:	Stable for 12 months from date of receipt.
Predicted Protein Size:	115 kDa
Gene Name:	KIAA0355
Database Link:	NP_055501 Entrez Gene 9710 Human O15063
Background:	The function of this protein remains unknown.
Synonyms:	KIAA0355
Note:	Immunogen Sequence Homology: Human: 100%; Dog: 93%; Pig: 93%; Rat: 93%; Horse: 93%; Mouse: 93%; Bovine: 93%; Rabbit: 93%; Guinea pig: 92%; Zebrafish: 83%

[View online »](#)

Product images:


Host: Rabbit; Target Name: KIAA0355; Sample
Tissue: Fetal Liver lysates; Antibody Dilution: 1.0
ug/ml