

Product datasheet for **TA337375**

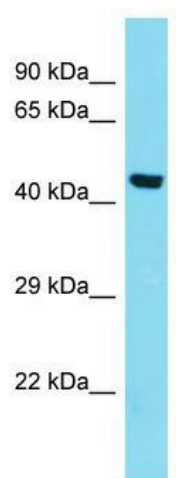
DELE1 Rabbit Polyclonal Antibody

Product data:

Product Type:	Primary Antibodies
Applications:	WB
Recommended Dilution:	WB
Reactivity:	Human
Host:	Rabbit
Isotype:	IgG
Clonality:	Polyclonal
Immunogen:	The immunogen for Anti-KIAA0141 antibody is: synthetic peptide directed towards the N-terminal region of Human KIAA0141. Synthetic peptide located within the following region: QEEASAQPRNFSHNSLRGARPQDPSEEGPGDFGFLHASSSIESEAKPAQP
Formulation:	Liquid. Purified antibody supplied in 1x PBS buffer with 0.09% (w/v) sodium azide and 2% sucrose.
Purification:	Affinity Purified
Conjugation:	Unconjugated
Storage:	Store at -20°C as received.
Stability:	Stable for 12 months from date of receipt.
Predicted Protein Size:	45 kDa
Gene Name:	KIAA0141
Database Link:	NP_055588 Entrez Gene 9812 Human Q14154
Background:	KIAA0141 is essential for the induction of death receptor-mediated apoptosis through the regulation of caspase activation.
Synonyms:	DELE
Note:	Immunogen Sequence Homology: Human: 100%; Horse: 79%; Bovine: 77%



[View online »](#)

Product images:

Host: Rabbit; Target Name: KIAA0141; Sample Tissue: HepG2 Whole Cell lysates; Antibody Dilution: 1.0 ug/ml KIAA0141 is supported by BioGPS gene expression data to be expressed in HepG2