

## Product datasheet for **TA337374**

### KDM4E Rabbit Polyclonal Antibody

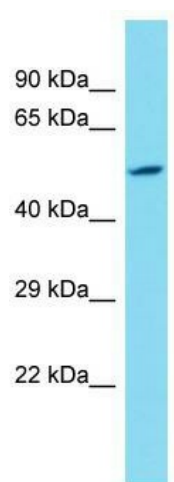
#### Product data:

Product Type:	Primary Antibodies
Applications:	WB
Recommended Dilution:	WB
Reactivity:	Human
Host:	Rabbit
Isotype:	IgG
Clonality:	Polyclonal
Immunogen:	The immunogen for Anti-KDM4E antibody is: synthetic peptide directed towards the N-terminal region of Human KDM4E. Synthetic peptide located within the following region: YDDIEDILIATPLQQVTSGQGGVFTQYHKKKKAMRVGQYRRLANSKKYQT
Formulation:	Liquid. Purified antibody supplied in 1x PBS buffer with 0.09% (w/v) sodium azide and 2% sucrose. <i>Note that this product is shipped as lyophilized powder to China customers.</i>
Purification:	Affinity Purified
Conjugation:	Unconjugated
Storage:	Store at -20°C as received.
Stability:	Stable for 12 months from date of receipt.
Predicted Protein Size:	56 kDa
Gene Name:	lysine demethylase 4E
Database Link:	<a href="#">NP_001155102</a> <a href="#">Entrez Gene 390245 Human</a> <a href="#">B2RXH2</a>
Background:	KDM4E is a histone demethylase that specifically demethylates 'Lys-9' of histone H3, thereby playing a central role in histone code.
Synonyms:	JMJD2E; KDM4DL
Note:	Immunogen Sequence Homology: Human: 100%; Rat: 93%; Mouse: 86%; Dog: 83%; Pig: 83%; Horse: 83%; Bovine: 83%; Guinea pig: 83%; Zebrafish: 79%; Rabbit: 77%



[View online »](#)

## Product images:



Host: Rabbit; Target Name: KDM4E; Sample  
Tissue: 721\_B Whole Cell lysates; Antibody  
Dilution: 1.0 ug/ml