

Product datasheet for **TA337373**

POGLUT3 Rabbit Polyclonal Antibody

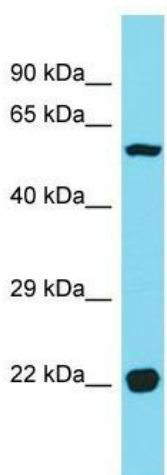
Product data:

Product Type:	Primary Antibodies
Applications:	WB
Recommended Dilution:	WB
Reactivity:	Human
Host:	Rabbit
Isotype:	IgG
Clonality:	Polyclonal
Immunogen:	The immunogen for Anti-KDELC2 antibody is: synthetic peptide directed towards the C-terminal region of Human KDELC2. Synthetic peptide located within the following region: DLLEKVKWAKENDEEAKKIAKEGQLMARDLLQPHRLYCYYYQVLQKYAER
Formulation:	Liquid. Purified antibody supplied in 1x PBS buffer with 0.09% (w/v) sodium azide and 2% sucrose.
Purification:	Affinity Purified
Conjugation:	Unconjugated
Storage:	Store at -20°C as received.
Stability:	Stable for 12 months from date of receipt.
Predicted Protein Size:	56 kDa
Gene Name:	KDEL motif containing 2
Database Link:	NP_714916 Entrez Gene 143888 Human Q7Z4H8
Background:	The function of this protein remains unknown.
Synonyms:	MGC33424
Note:	Immunogen Sequence Homology: Pig: 100%; Human: 100%; Mouse: 100%; Bovine: 100%; Rabbit: 100%; Guinea pig: 100%; Rat: 93%; Horse: 93%; Dog: 86%; Zebrafish: 83%



[View online »](#)

Product images:



Host: Rabbit
Target Name: KDELC2
Sample Tissue: HT1080 Cell Lysate
Antibody Dilution: 1.0µg/ml

Host: Rabbit; Target Name: KDELC2; Sample Tissue: HT1080 Whole Cell lysates; Antibody Dilution: 1.0 ug/ml