

## Product datasheet for **TA337371**

### **KBTBD12 Rabbit Polyclonal Antibody**

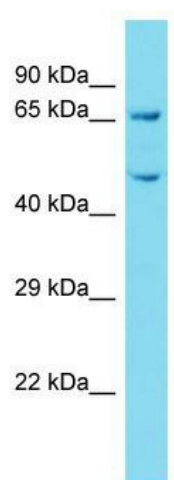
#### **Product data:**

<b>Product Type:</b>	Primary Antibodies
<b>Applications:</b>	WB
<b>Recommended Dilution:</b>	WB
<b>Reactivity:</b>	Human
<b>Host:</b>	Rabbit
<b>Isotype:</b>	IgG
<b>Clonality:</b>	Polyclonal
<b>Immunogen:</b>	The immunogen for Anti-KBTBD12 antibody is: synthetic peptide directed towards the N-terminal region of Human KBTBD12. Synthetic peptide located within the following region: FAKQIGAEDLSDRSKKYLYQHFAEVSLHEEILEIEVHQFLTIKSDDLNI
<b>Formulation:</b>	Liquid. Purified antibody supplied in 1x PBS buffer with 0.09% (w/v) sodium azide and 2% sucrose.
<b>Purification:</b>	Affinity Purified
<b>Conjugation:</b>	Unconjugated
<b>Storage:</b>	Store at -20°C as received.
<b>Stability:</b>	Stable for 12 months from date of receipt.
<b>Predicted Protein Size:</b>	70 kDa
<b>Gene Name:</b>	kelch repeat and BTB domain containing 12
<b>Database Link:</b>	<a href="#">NP_997218</a> <a href="#">Entrez Gene 166348 Human</a> <a href="#">Q3ZCT8</a>
<b>Background:</b>	The function of this protein remains unknown.
<b>Synonyms:</b>	KLHDC6
<b>Note:</b>	Immunogen Sequence Homology: Human: 100%; Dog: 93%; Pig: 93%; Rat: 93%; Horse: 93%; Mouse: 93%; Guinea pig: 93%; Bovine: 79%; Rabbit: 79%



[View online »](#)

## Product images:



Host: Rabbit; Target Name: KBTBD12; Sample  
Tissue: HepG2 Whole Cell lysates; Antibody  
Dilution: 1.0 ug/ml