

Product datasheet for **TA337369**

KBTBD6 Rabbit Polyclonal Antibody

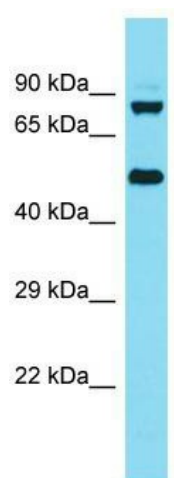
Product data:

Product Type:	Primary Antibodies
Applications:	WB
Recommended Dilution:	WB
Reactivity:	Human
Host:	Rabbit
Isotype:	IgG
Clonality:	Polyclonal
Immunogen:	The immunogen for Anti-KBTBD6 antibody is: synthetic peptide directed towards the N-terminal region of Human KBTBD6. Synthetic peptide located within the following region: QSREDAPRSRLASPRGGKRPKIKHKPTVSAFFTGPEELKDTAHSALLA
Formulation:	Liquid. Purified antibody supplied in 1x PBS buffer with 0.09% (w/v) sodium azide and 2% sucrose. <i>Note that this product is shipped as lyophilized powder to China customers.</i>
Purification:	Affinity Purified
Conjugation:	Unconjugated
Storage:	Store at -20°C as received.
Stability:	Stable for 12 months from date of receipt.
Predicted Protein Size:	76 kDa
Gene Name:	kelch repeat and BTB domain containing 6
Database Link:	NP_690867 Entrez Gene 89890 Human Q86V97
Background:	The function of this protein remains unknown.
Synonyms:	DKFZp547E1912; DKFZp547M073; FLJ58260
Note:	Immunogen Sequence Homology: Human: 100%; Dog: 93%; Horse: 93%; Pig: 86%; Bovine: 86%; Rat: 79%; Mouse: 79%; Guinea pig: 79%



[View online »](#)

Product images:



Host: Rabbit; Target Name: KBTBD6; Sample Tissue: HeLa Whole Cell lysates; Antibody Dilution: 1.0 ug/ml