

Product datasheet for **TA337368**

JRKL Rabbit Polyclonal Antibody

Product data:

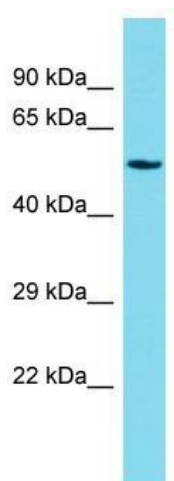
Product Type:	Primary Antibodies
Applications:	WB
Recommended Dilution:	WB
Reactivity:	Human
Host:	Rabbit
Isotype:	IgG
Clonality:	Polyclonal
Immunogen:	The immunogen for Anti-JRKL antibody is: synthetic peptide directed towards the N-terminal region of Human JRKL. Synthetic peptide located within the following region: DKLDIIKKLEDGGSSKQLAVIYGIGETTVRDIRKNKEKIITYASSSDSTS
Formulation:	Liquid. Purified antibody supplied in 1x PBS buffer with 0.09% (w/v) sodium azide and 2% sucrose. <i>Note that this product is shipped as lyophilized powder to China customers.</i>
Purification:	Affinity Purified
Conjugation:	Unconjugated
Storage:	Store at -20°C as received.
Stability:	Stable for 12 months from date of receipt.
Predicted Protein Size:	59 kDa
Gene Name:	JRK-like
Database Link:	NP_003763 Entrez Gene 8690 Human Q9Y4A0
Background:	The function of this gene has not yet been defined, however, the encoded protein shares similarity with the human (41% identical) and mouse (34% identical) jerky gene products. This protein may act as a nuclear regulatory protein. Alternatively spliced transcript variants have been found for this gene.
Synonyms:	HHMJG



[View online »](#)

Note: Immunogen Sequence Homology: Dog: 100%; Rat: 100%; Human: 100%; Mouse: 100%; Bovine: 100%; Rabbit: 100%; Pig: 85%; Guinea pig: 85%

Product images:



Host: Rabbit; Target Name: JRKL; Sample Tissue: Fetal Heart lysates; Antibody Dilution: 1.0 ug/ml