

## Product datasheet for **TA337366**

### Josephin 1 (JOSD1) Rabbit Polyclonal Antibody

#### Product data:

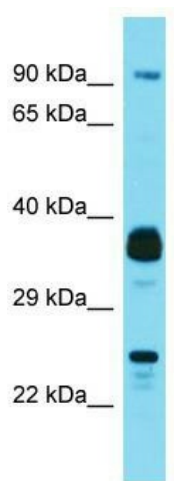
Product Type:	Primary Antibodies
Applications:	WB
Recommended Dilution:	WB
Reactivity:	Human
Host:	Rabbit
Isotype:	IgG
Clonality:	Polyclonal
Immunogen:	The immunogen for Anti-JOSD1 antibody is: synthetic peptide directed towards the N-terminal region of Human JOSD1. Synthetic peptide located within the following region: SCVPWKGDKAKSESLELPQAAPPQIYHEKQRRELICALHALNNVFQDSNAF
Formulation:	Liquid. Purified antibody supplied in 1x PBS buffer with 0.09% (w/v) sodium azide and 2% sucrose. <i>Note that this product is shipped as lyophilized powder to China customers.</i>
Purification:	Affinity Purified
Conjugation:	Unconjugated
Storage:	Store at -20°C as received.
Stability:	Stable for 12 months from date of receipt.
Predicted Protein Size:	23 kDa
Gene Name:	Josephin domain containing 1
Database Link:	<a href="#">NP_055691</a> <a href="#">Entrez Gene 9929 Human Q15040</a>
Background:	JOSD1 has low protease activity towards poly-ubiquitin chains (in vitro) and may act as a deubiquitinating enzyme.
Synonyms:	dJ508I15.2
Note:	Immunogen Sequence Homology: Dog: 100%; Pig: 100%; Rat: 100%; Horse: 100%; Human: 100%; Guinea pig: 100%; Bovine: 93%; Mouse: 92%



[View online »](#)

Protein Families: Druggable Genome

### Product images:



Host: Rabbit; Target Name: JOSD1; Sample  
Tissue: MCF7 Whole Cell lysates; Antibody  
Dilution: 1.0 ug/ml