

Product datasheet for **TA337363**

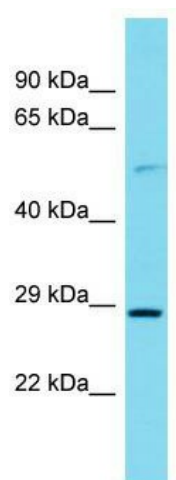
ITPRIPL2 Rabbit Polyclonal Antibody

Product data:

Product Type:	Primary Antibodies
Applications:	WB
Recommended Dilution:	WB
Reactivity:	Human
Host:	Rabbit
Isotype:	IgG
Clonality:	Polyclonal
Immunogen:	The immunogen for Anti-ITPRIPL2 antibody is: synthetic peptide directed towards the C-terminal region of Human ITPRIPL2. Synthetic peptide located within the following region: DGHARELAAARLLSTWQLPQLLRAYGGPRYLARCPPRSQRTQGFLGE
Formulation:	Liquid. Purified antibody supplied in 1x PBS buffer with 0.09% (w/v) sodium azide and 2% sucrose. <i>Note that this product is shipped as lyophilized powder to China customers.</i>
Purification:	Affinity Purified
Conjugation:	Unconjugated
Storage:	Store at -20°C as received.
Stability:	Stable for 12 months from date of receipt.
Predicted Protein Size:	54 kDa
Gene Name:	inositol 1,4,5-trisphosphate receptor interacting protein-like 2
Database Link:	NP_001030013 Entrez Gene 162073 Human Q3MIP1
Background:	The function of this protein remains unknown.
Synonyms:	FLJ22994; MGC126798; MGC126800
Note:	Immunogen Sequence Homology: Human: 100%; Bovine: 86%
Protein Families:	Transmembrane



[View online »](#)

Product images:

Host: Rabbit; Target Name: ITPRIPL2; Sample
Tissue: HeLa Whole Cell lysates; Antibody Dilution:
1.0 ug/ml