

Product datasheet for **TA337362**

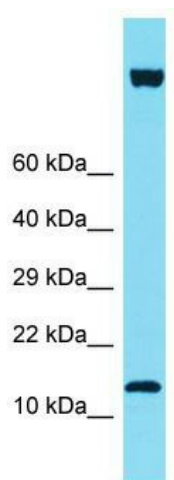
IQCF6 Rabbit Polyclonal Antibody

Product data:

Product Type:	Primary Antibodies
Applications:	WB
Recommended Dilution:	WB
Reactivity:	Human
Host:	Rabbit
Isotype:	IgG
Clonality:	Polyclonal
Immunogen:	The immunogen for Anti-IQCF6 antibody is: synthetic peptide directed towards the C-terminal region of Human IQCF6. Synthetic peptide located within the following region: VQAQVRMWQARRRFLQARQAACIIQSHWRWHASQTRGLIRGHYEVRSRL
Formulation:	Liquid. Purified antibody supplied in 1x PBS buffer with 0.09% (w/v) sodium azide and 2% sucrose.
Purification:	Affinity Purified
Conjugation:	Unconjugated
Storage:	Store at -20°C as received.
Stability:	Stable for 12 months from date of receipt.
Predicted Protein Size:	14 kDa
Gene Name:	IQ motif containing F6
Database Link:	NP_001137305 Entrez Gene 440956 Human A8MYZ5
Background:	The function of this protein remains unknown.
Synonyms:	IQ motif containing F6
Note:	Immunogen Sequence Homology: Human: 100%; Pig: 93%; Bovine: 93%; Rabbit: 93%; Guinea pig: 93%; Dog: 86%; Rat: 86%


[View online »](#)

Product images:



Host: Rabbit; Target Name: IQCF6; Sample Tissue: HT1080 Whole Cell lysates; Antibody Dilution: 1.0 ug/ml