

Product datasheet for TA337360

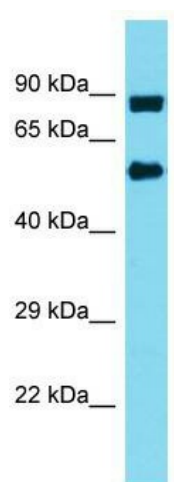
INTS10 Rabbit Polyclonal Antibody

Product data:

Product Type:	Primary Antibodies
Applications:	WB
Recommended Dilution:	WB
Reactivity:	Human
Host:	Rabbit
Isotype:	IgG
Clonality:	Polyclonal
Immunogen:	The immunogen for Anti-INTS10 antibody is: synthetic peptide directed towards the N-terminal region of Human INTS10. Synthetic peptide located within the following region: NAERTATAGRLLYDMFVNFPDQPVVWREISIITSALRNDSQDKQTQFLRS
Formulation:	Liquid. Purified antibody supplied in 1x PBS buffer with 0.09% (w/v) sodium azide and 2% sucrose.
Purification:	Affinity Purified
Conjugation:	Unconjugated
Storage:	Store at -20°C as received.
Stability:	Stable for 12 months from date of receipt.
Predicted Protein Size:	82 kDa
Gene Name:	integrator complex subunit 10
Database Link:	NP_060612 Entrez Gene 55174 Human Q9NVR2
Background:	INTS10 is a subunit of the Integrator complex, which associates with the C-terminal domain of RNA polymerase II large subunit and mediates 3-prime end processing of small nuclear RNAs U1.
Synonyms:	C8orf35; INT10
Note:	Immunogen Sequence Homology: Dog: 100%; Pig: 100%; Rat: 100%; Horse: 100%; Human: 100%; Mouse: 100%; Bovine: 100%; Rabbit: 100%; Guinea pig: 100%; Zebrafish: 85%


[View online »](#)

Product images:



Host: Rabbit; Target Name: INTS10; Sample
Tissue: MDA-MB-435S Whole Cell lysates;
Antibody Dilution: 1.0 ug/ml