

Product datasheet for **TA337358**

RC74 (INTS9) Rabbit Polyclonal Antibody

Product data:

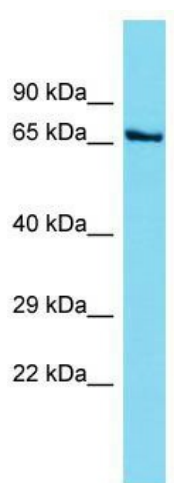
Product Type:	Primary Antibodies
Applications:	WB
Recommended Dilution:	WB
Reactivity:	Human
Host:	Rabbit
Isotype:	IgG
Clonality:	Polyclonal
Immunogen:	The immunogen for Anti-INTS9 antibody is: synthetic peptide directed towards the C-terminal region of Human INTS9. Synthetic peptide located within the following region: TKDNKHLLQPPRPAQPTSGKKRKRVSDDVPDCKVLKPLLSGSIPVEQFV
Formulation:	Liquid. Purified antibody supplied in 1x PBS buffer with 0.09% (w/v) sodium azide and 2% sucrose. <i>Note that this product is shipped as lyophilized powder to China customers.</i>
Purification:	Affinity Purified
Conjugation:	Unconjugated
Storage:	Store at -20°C as received.
Stability:	Stable for 12 months from date of receipt.
Predicted Protein Size:	71 kDa
Gene Name:	integrator complex subunit 9
Database Link:	NP_060720 Entrez Gene 55756 Human Q9NV88
Background:	This gene encodes a subunit of the Integrator complex. This protein complex binds the C-terminal domain of RNA polymerase II and likely plays a role in small nuclear RNA processing. The encoded protein has similarities to the subunits of the cleavage and polyadenylation specificity factor complex. Alternatively spliced transcript variants have been described.
Synonyms:	CPSF2L; INT9; RC74



[View online »](#)

Note: Immunogen Sequence Homology: Human: 100%; Rat: 93%; Pig: 86%; Rabbit: 86%; Guinea pig: 86%; Dog: 85%; Bovine: 85%; Horse: 79%; Mouse: 77%

Product images:



Host: Rabbit; Target Name: INTS9; Sample Tissue: Fetal Lung lysates; Antibody Dilution: 1.0 ug/ml