

## Product datasheet for **TA337357**

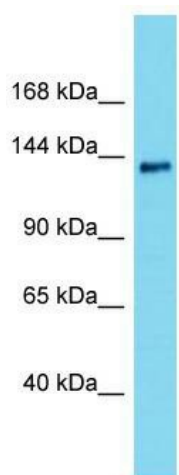
### INTS2 Rabbit Polyclonal Antibody

#### Product data:

Product Type:	Primary Antibodies
Applications:	WB
Recommended Dilution:	WB
Reactivity:	Human
Host:	Rabbit
Isotype:	IgG
Clonality:	Polyclonal
Immunogen:	The immunogen for Anti-INTS2 antibody is: synthetic peptide directed towards the N-terminal region of Human INTS2. Synthetic peptide located within the following region: VCRGLIKNGERQDEESLGRRRTDALRFLCKMNPQALKVIRGMVVEECHL
Formulation:	Liquid. Purified antibody supplied in 1x PBS buffer with 0.09% (w/v) sodium azide and 2% sucrose. <i>Note that this product is shipped as lyophilized powder to China customers.</i>
Purification:	Affinity Purified
Conjugation:	Unconjugated
Storage:	Store at -20°C as received.
Stability:	Stable for 12 months from date of receipt.
Predicted Protein Size:	134 kDa
Gene Name:	integrator complex subunit 2
Database Link:	<a href="#">NP_065799</a> <a href="#">Entrez Gene 57508 Human</a> <a href="#">Q9H0H0</a>
Background:	INTS2 is a subunit of the Integrator complex, which associates with the C-terminal domain of RNA polymerase II large subunit (POLR2A; MIM 180660) and mediates 3-prime end processing of small nuclear RNAs U1.
Synonyms:	INT2; KIAA1287
Note:	Immunogen Sequence Homology: Dog: 100%; Pig: 100%; Rat: 100%; Horse: 100%; Human: 100%; Mouse: 100%; Bovine: 100%; Rabbit: 100%; Guinea pig: 100%; Zebrafish: 93%



[View online »](#)

**Product images:**

Host: Rabbit; Target Name: INTS2; Sample Tissue: MCF7 Whole Cell lysates; Antibody Dilution: 1.0 ug/ml