

Product datasheet for **TA337356**

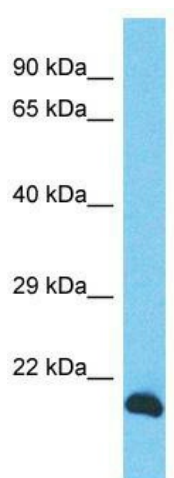
INO80C Rabbit Polyclonal Antibody

Product data:

Product Type:	Primary Antibodies
Applications:	WB
Recommended Dilution:	WB
Reactivity:	Human
Host:	Rabbit
Isotype:	IgG
Clonality:	Polyclonal
Immunogen:	The immunogen for Anti-INO80C antibody is: synthetic peptide directed towards the N-terminal region of Human INO80C. Synthetic peptide located within the following region: VATTSTPGIVRNSKKRPASPSHNGSSGGYGASKKKKASASSFAQGISME
Formulation:	Liquid. Purified antibody supplied in 1x PBS buffer with 0.09% (w/v) sodium azide and 2% sucrose.
Purification:	Affinity Purified
Conjugation:	Unconjugated
Storage:	Store at -20°C as received.
Stability:	Stable for 12 months from date of receipt.
Predicted Protein Size:	21 kDa
Gene Name:	INO80 complex subunit C
Database Link:	NP_919257 Entrez Gene 125476 Human Q6PI98
Background:	INO80C is a proposed core component of the chromatin remodeling INO80 complex which is involved in transcriptional regulation, DNA replication and probably DNA repair.
Synonyms:	C18orf37; hles6; IES6
Note:	Immunogen Sequence Homology: Human: 100%; Rat: 93%; Mouse: 93%; Rabbit: 93%; Dog: 86%; Pig: 86%; Horse: 86%; Bovine: 86%; Guinea pig: 86%



[View online »](#)

Product images:

Host: Rabbit; Target Name: INO80C; Sample
Tissue: PANC1 Whole cell lysates; Antibody
Dilution: 1.0 ug/ml