

Product datasheet for **TA337355**

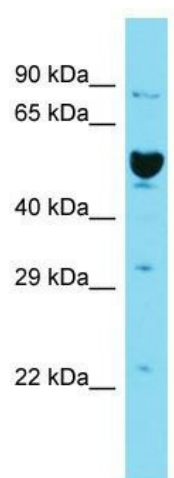
ILDR2 Rabbit Polyclonal Antibody

Product data:

| | |
|-------------------------|--|
| Product Type: | Primary Antibodies |
| Applications: | WB |
| Recommended Dilution: | WB |
| Reactivity: | Human |
| Host: | Rabbit |
| Isotype: | IgG |
| Clonality: | Polyclonal |
| Immunogen: | The immunogen for Anti-ILDR2 antibody is: synthetic peptide directed towards the C-terminal region of Human ILDR2. Synthetic peptide located within the following region: AHLPLVSRTPGTAPKYDHSYLG SARERQARPEGASRGG SLETPSKRSAQ |
| Formulation: | Liquid. Purified antibody supplied in 1x PBS buffer with 0.09% (w/v) sodium azide and 2% sucrose. <i>Note that this product is shipped as lyophilized powder to China customers.</i> |
| Purification: | Affinity Purified |
| Conjugation: | Unconjugated |
| Storage: | Store at -20°C as received. |
| Stability: | Stable for 12 months from date of receipt. |
| Predicted Protein Size: | 56 kDa |
| Gene Name: | immunoglobulin like domain containing receptor 2 |
| Database Link: | NP_955383 Entrez Gene 387597 Human Q71H61 |
| Background: | The function of this protein remains unknown. |
| Synonyms: | C1orf32; dJ782G3.1 |
| Note: | Immunogen Sequence Homology: Dog: 100%; Human: 100% |
| Protein Families: | Transmembrane |



[View online »](#)

Product images:

Host: Rabbit; Target Name: ILDR2; Sample Tissue: 721_B Whole Cell lysates; Antibody Dilution: 1.0 ug/ml