

Product datasheet for **TA337354**

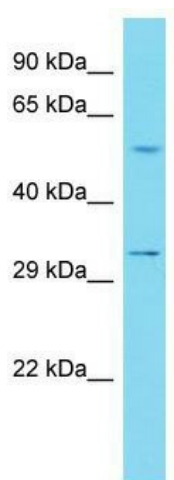
ILDR2 Rabbit Polyclonal Antibody

Product data:

Product Type:	Primary Antibodies
Applications:	WB
Recommended Dilution:	WB
Reactivity:	Human
Host:	Rabbit
Isotype:	IgG
Clonality:	Polyclonal
Immunogen:	The immunogen for Anti-ILDR2 antibody is: synthetic peptide directed towards the C-terminal region of Human ILDR2. Synthetic peptide located within the following region: QDDQEDASDDALPPYSELELTRGPSYRGRDLPYHSNSEKKRKKKEPAKKTN
Formulation:	Liquid. Purified antibody supplied in 1x PBS buffer with 0.09% (w/v) sodium azide and 2% sucrose. <i>Note that this product is shipped as lyophilized powder to China customers.</i>
Purification:	Affinity Purified
Conjugation:	Unconjugated
Storage:	Store at -20°C as received.
Stability:	Stable for 12 months from date of receipt.
Predicted Protein Size:	56 kDa
Gene Name:	immunoglobulin like domain containing receptor 2
Database Link:	NP_955383 Entrez Gene 387597 Human Q71H61
Background:	The function of this protein remains unknown.
Synonyms:	C1orf32; dJ782G3.1
Note:	Immunogen Sequence Homology: Human: 100%; Rat: 93%; Bovine: 93%; Dog: 92%; Mouse: 92%
Protein Families:	Transmembrane



[View online »](#)

Product images:

Host: Rabbit; Target Name: ILDR2; Sample Tissue: 721_B Whole Cell lysates; Antibody Dilution: 1.0 ug/ml