

## Product datasheet for **TA337352**

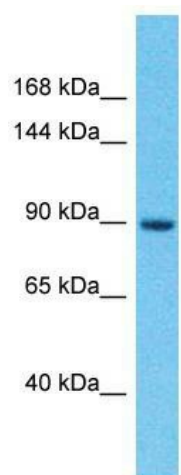
### IGSF22 Rabbit Polyclonal Antibody

#### Product data:

Product Type:	Primary Antibodies
Applications:	WB
Recommended Dilution:	WB
Reactivity:	Human
Host:	Rabbit
Isotype:	IgG
Clonality:	Polyclonal
Immunogen:	The immunogen for Anti-IGSF22 antibody is: synthetic peptide directed towards the N-terminal region of Human IGSF22. Synthetic peptide located within the following region: NKEHVLKLEPLTSDSDSNYKCIASNDHADAIYTVSLLVTEGQEKMDFKKM
Formulation:	Liquid. Purified antibody supplied in 1x PBS buffer with 0.09% (w/v) sodium azide and 2% sucrose. <i>Note that this product is shipped as lyophilized powder to China customers.</i>
Purification:	Affinity Purified
Conjugation:	Unconjugated
Storage:	Store at -20°C as received.
Stability:	Stable for 12 months from date of receipt.
Predicted Protein Size:	99 kDa
Gene Name:	immunoglobulin superfamily member 22
Database Link:	<a href="#">NP_775859</a> <a href="#">Entrez Gene 283284 Human</a> <a href="#">Q8N9C0</a>
Background:	The function of this protein remains unknown.
Synonyms:	IGFN2
Note:	Immunogen Sequence Homology: Dog: 100%; Human: 100%



[View online »](#)

**Product images:**

Host: Rabbit; Target Name: IGSF22; Sample  
Tissue: PANC1 Whole cell lysates; Antibody  
Dilution: 1.0 ug/ml