

## Product datasheet for **TA337351**

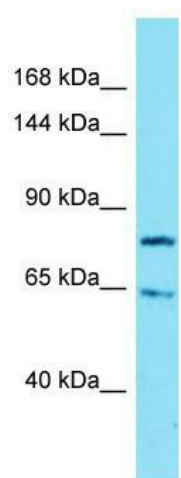
### IGSF9B Rabbit Polyclonal Antibody

#### Product data:

Product Type:	Primary Antibodies
Applications:	WB
Recommended Dilution:	WB
Reactivity:	Human
Host:	Rabbit
Isotype:	IgG
Clonality:	Polyclonal
Immunogen:	The immunogen for Anti-IGSF9B antibody is: synthetic peptide directed towards the middle region of Human IGSF9B. Synthetic peptide located within the following region: QDENVYFQNDLKLRLRILIDGTLIIFRVKPEDSGKYTCVPSNSLGRSPSA
Formulation:	Liquid. Purified antibody supplied in 1x PBS buffer with 0.09% (w/v) sodium azide and 2% sucrose.
Purification:	Affinity Purified
Conjugation:	Unconjugated
Storage:	Store at -20°C as received.
Stability:	Stable for 12 months from date of receipt.
Predicted Protein Size:	78 kDa
Gene Name:	immunoglobulin superfamily member 9B
Database Link:	<a href="#">NP_055802</a> <a href="#">Entrez Gene 22997 Human</a> <a href="#">Q9UPX0</a>
Background:	The function of this protein remains unknown.
Synonyms:	KIAA1030
Note:	Immunogen Sequence Homology: Dog: 100%; Pig: 100%; Rat: 100%; Horse: 100%; Human: 100%; Mouse: 100%; Bovine: 100%; Guinea pig: 100%; Rabbit: 93%; Zebrafish: 91%
Protein Families:	Transmembrane



[View online »](#)

**Product images:**

Host: Rabbit; Target Name: IGSF9B; Sample  
Tissue: Jurkat Whole Cell lysates; Antibody  
Dilution: 1.0 ug/ml