

## Product datasheet for **TA337350**

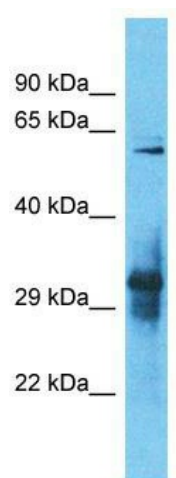
### IGLON5 Rabbit Polyclonal Antibody

#### Product data:

Product Type:	Primary Antibodies
Applications:	WB
Recommended Dilution:	WB
Reactivity:	Human
Host:	Rabbit
Isotype:	IgG
Clonality:	Polyclonal
Immunogen:	The immunogen for Anti-IGLON5 antibody is: synthetic peptide directed towards the C-terminal region of Human IGLON5. Synthetic peptide located within the following region: AALLRCEAMAVPPADDFQWYKDDRLLSSGTAEGLKVQTERTRSMLLFANVS
Formulation:	Liquid. Purified antibody supplied in 1x PBS buffer with 0.09% (w/v) sodium azide and 2% sucrose. <i>Note that this product is shipped as lyophilized powder to China customers.</i>
Purification:	Affinity Purified
Conjugation:	Unconjugated
Storage:	Store at -20°C as received.
Stability:	Stable for 12 months from date of receipt.
Predicted Protein Size:	34 kDa
Gene Name:	IgLON family member 5
Database Link:	<a href="#">NP_001094842</a> <a href="#">Entrez Gene 402665 Human</a> <a href="#">A6NGN9</a>
Background:	The function of this protein remains unknown.
Synonyms:	A230106M20Rik; Gm1431
Note:	Immunogen Sequence Homology: Dog: 100%; Pig: 100%; Rat: 100%; Human: 100%; Mouse: 100%; Bovine: 100%; Rabbit: 100%; Guinea pig: 100%; Horse: 93%
Protein Families:	Transmembrane



[View online »](#)

**Product images:**

Host: Rabbit; Target Name: IGLON5; Sample  
Tissue: 721\_B Whole cell lysates; Antibody  
Dilution: 1.0 ug/ml