

## Product datasheet for **TA337349**

### IFIT1 Rabbit Polyclonal Antibody

#### Product data:

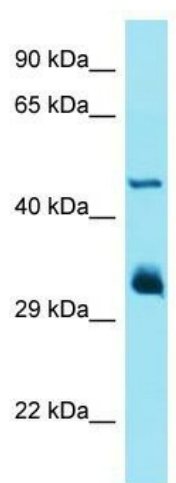
Product Type:	Primary Antibodies
Applications:	WB
Recommended Dilution:	WB
Reactivity:	Human
Host:	Rabbit
Isotype:	IgG
Clonality:	Polyclonal
Immunogen:	The immunogen for Anti-IFIT1 antibody is: synthetic peptide directed towards the middle region of Human IFIT1. Synthetic peptide located within the following region: PFRYRMECPEIDCEEGWALLKCGGKNYERAKACFEKVLVDPENPESSA
Formulation:	Liquid. Purified antibody supplied in 1x PBS buffer with 0.09% (w/v) sodium azide and 2% sucrose. <i>Note that this product is shipped as lyophilized powder to China customers.</i>
Purification:	Affinity Purified
Conjugation:	Unconjugated
Storage:	Store at -20°C as received.
Stability:	Stable for 12 months from date of receipt.
Predicted Protein Size:	49 kDa
Gene Name:	interferon induced protein with tetratricopeptide repeats 1
Database Link:	<a href="#">NP_001539</a> <a href="#">Entrez Gene 3434 Human</a> <a href="#">P09914</a>
Background:	This gene encodes a protein containing tetratricopeptide repeats that was originally identified as induced upon treatment with interferon. The encoded protein may inhibit viral replication and translational initiation. This gene is located in a cluster on chromosome 10 with five other closely related genes. There is a pseudogene for this gene on chromosome 13. Alternatively spliced transcript variants encoding multiple isoforms have been observed.
Synonyms:	C56; G10P1; IFI-56; IFI-56K; IFI56; IFIT-1; IFNAI1; ISG56; P56; RNM561



[View online »](#)

**Note:** Immunogen Sequence Homology: Human: 100%; Pig: 92%; Bovine: 92%; Rabbit: 92%; Dog: 85%; Horse: 85%

**Product images:**



Host: Rabbit; Target Name: IFIT1; Sample Tissue: HepG2 Whole Cell lysates; Antibody Dilution: 1.0 ug/ml