

Product datasheet for **TA337348**

HSD11B1L Rabbit Polyclonal Antibody

Product data:

Product Type:	Primary Antibodies
Applications:	WB
Recommended Dilution:	WB
Reactivity:	Human
Host:	Rabbit
Isotype:	IgG
Clonality:	Polyclonal
Immunogen:	The immunogen for Anti-HSD11B1L antibody is: synthetic peptide directed towards the C-terminal region of Human HSD11B1L. Synthetic peptide located within the following region: PPTVPGARTLTETPLRGWPQPKMKSSRQKSKTEKNDGHLEPVTAWEVQVP
Formulation:	Liquid. Purified antibody supplied in 1x PBS buffer with 0.09% (w/v) sodium azide and 2% sucrose.
Purification:	Affinity Purified
Conjugation:	Unconjugated
Storage:	Store at -20°C as received.
Stability:	Stable for 12 months from date of receipt.
Predicted Protein Size:	34 kDa
Gene Name:	hydroxysteroid (11-beta) dehydrogenase 1-like
Database Link:	NP_940935 Entrez Gene 374875 Human Q7Z5I1
Background:	This gene is a member of the hydroxysteroid dehydrogenase family. The encoded protein is similar to an enzyme that catalyzes the interconversion of inactive to active glucocorticoids (e.g. cortisone). Alternatively spliced transcript variants encoding multiple isoforms have been observed for this gene.
Synonyms:	11-beta-HSD3; 11-DH3; HSD3; SCDR10; SCDR10B; SDR26C2
Note:	Immunogen Sequence Homology: Human: 100%

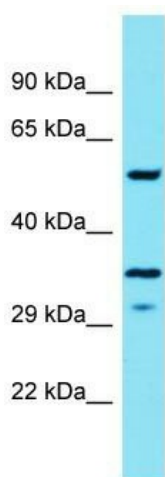


[View online »](#)

Protein Families:

Druggable Genome

Product images:



Host: Rabbit

Target Name: HSD11B1L

Sample Tissue: RPMI-8226 Cell Lysate

Antibody Dilution: 1.0 µg/ml

Host: Rabbit; Target Name: HSD11B1L; Sample Tissue: RPMI-8226 Whole Cell lysates; Antibody Dilution: 1.0 ug/ml