

## Product datasheet for **TA337344**

### H2AC8 Rabbit Polyclonal Antibody

#### Product data:

Product Type:	Primary Antibodies
Applications:	WB
Recommended Dilution:	WB
Reactivity:	Human
Host:	Rabbit
Isotype:	IgG
Clonality:	Polyclonal
Immunogen:	The immunogen for Anti-HIST1H2AE antibody is: synthetic peptide directed towards the N-terminal region of Human HIST1H2AE. Synthetic peptide located within the following region: GKQGGKARAKAKTRSSRAGLQFPVGRVHRLLRKGNYSERVGAGAPVYLAA
Formulation:	Liquid. Purified antibody supplied in 1x PBS buffer with 0.09% (w/v) sodium azide and 2% sucrose. <i>Note that this product is shipped as lyophilized powder to China customers.</i>
Purification:	Affinity Purified
Conjugation:	Unconjugated
Storage:	Store at -20°C as received.
Stability:	Stable for 12 months from date of receipt.
Predicted Protein Size:	14 kDa
Gene Name:	histone cluster 1, H2ae
Database Link:	<a href="#">NP_066390</a> <a href="#">Entrez Gene 3012 Human</a> <a href="#">P04908</a>



[View online »](#)

**Background:**

Histones are basic nuclear proteins that are responsible for the nucleosome structure of the chromosomal fiber in eukaryotes. Nucleosomes consist of approximately 146 bp of DNA wrapped around a histone octamer composed of pairs of each of the four core histones (H2A, H2B, H3, and H4). The chromatin fiber is further compacted through the interaction of a linker histone, H1, with the DNA between the nucleosomes to form higher order chromatin structures. This gene is intronless and encodes a member of the histone H2A family. Transcripts from this gene lack polyA tails; instead, they contain a palindromic termination element. This gene is found in the large histone gene cluster on chromosome 6p22-p21.3.

**Synonyms:**

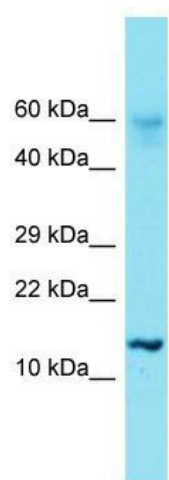
a; H2A; H2A.1; H2A.2; H2AFA

**Note:**

Immunogen Sequence Homology: Dog: 100%; Pig: 100%; Rat: 100%; Horse: 100%; Human: 100%; Mouse: 100%; Bovine: 100%; Rabbit: 100%; Zebrafish: 100%; Guinea pig: 100%

**Protein Pathways:**

Systemic lupus erythematosus

**Product images:**

Host: Rabbit; Target Name: HIST1H2AE; Sample Tissue: RPMI-8226 Whole Cell lysates; Antibody Dilution: 1.0 ug/ml