

Product datasheet for **TA337342**

HENMT1 Rabbit Polyclonal Antibody

Product data:

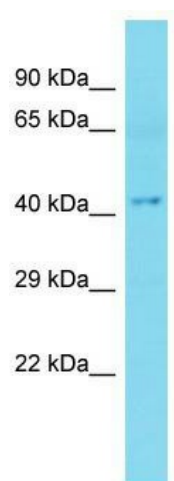
Product Type:	Primary Antibodies
Applications:	WB
Recommended Dilution:	WB
Reactivity:	Human
Host:	Rabbit
Isotype:	IgG
Clonality:	Polyclonal
Immunogen:	The immunogen for Anti-HENMT1 antibody is: synthetic peptide directed towards the C-terminal region of Human HENMT1. Synthetic peptide located within the following region: QVESLRVSHLPRRKEQAGERGDKPKDIGGSKAPVPCFGPVFTEVEKAKIE
Formulation:	Liquid. Purified antibody supplied in 1x PBS buffer with 0.09% (w/v) sodium azide and 2% sucrose. <i>Note that this product is shipped as lyophilized powder to China customers.</i>
Purification:	Affinity Purified
Conjugation:	Unconjugated
Storage:	Store at -20°C as received.
Stability:	Stable for 12 months from date of receipt.
Predicted Protein Size:	44 kDa
Gene Name:	HEN1 methyltransferase homolog 1
Database Link:	NP_653185 Entrez Gene 113802 Human Q5T8I9
Background:	HENMT1 is a methyltransferase that adds a 2'-O-methyl group at the 3'-end of piRNAs, a class of 24 to 30 nucleotide RNAs that are generated by a Dicer-independent mechanism and are primarily derived from transposons and other repeated sequence elements. This probably protects the 3'-end of piRNAs from uridylation activity and subsequent degradation. Stabilization of piRNAs is essential for gametogenesis.
Synonyms:	C1orf59; HEN1



[View online »](#)

Note: Immunogen Sequence Homology: Human: 100%

Product images:



Host: Rabbit; Target Name: HENMT1; Sample Tissue: Fetal Liver lysates; Antibody Dilution: 1.0 ug/ml