

## Product datasheet for **TA337341**

### **MROH7 Rabbit Polyclonal Antibody**

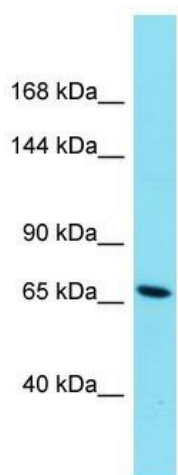
#### **Product data:**

Product Type:	Primary Antibodies
Applications:	WB
Recommended Dilution:	WB
Reactivity:	Human
Host:	Rabbit
Isotype:	IgG
Clonality:	Polyclonal
Immunogen:	The immunogen for Anti-HEATR8 antibody is: synthetic peptide directed towards the N-terminal region of Human HEATR8. Synthetic peptide located within the following region: LDLDSDKVSRPDSQGRLCPASNPIILSPSSTEAPRLSSGNHPQSNSSEDAFK
Formulation:	Liquid. Purified antibody supplied in 1x PBS buffer with 0.09% (w/v) sodium azide and 2% sucrose. <i>Note that this product is shipped as lyophilized powder to China customers.</i>
Purification:	Affinity Purified
Conjugation:	Unconjugated
Storage:	Store at -20°C as received.
Stability:	Stable for 12 months from date of receipt.
Predicted Protein Size:	68 kDa
Gene Name:	maestro heat like repeat family member 7
Database Link:	<a href="#">NP_001034553</a> <a href="#">Entrez Gene 374977 Human</a> <a href="#">Q68CQ1</a>
Background:	The function of this protein remains unknown.
Synonyms:	C1orf175; HEATR8
Note:	Immunogen Sequence Homology: Human: 100%



[View online »](#)

## Product images:



Host: Rabbit

Target Name: HEATR8

Sample Tissue: A549 Cell Lysate

Antibody Dilution: 1.0 $\mu$ g/ml

Host: Rabbit; Target Name: HEATR8; Sample Tissue: A549 Whole Cell lysates; Antibody Dilution: 1.0 ug/ml MROH7 is supported by BioGPS gene expression data to be expressed in A549