

Product datasheet for **TA337340**

HEATR6 Rabbit Polyclonal Antibody

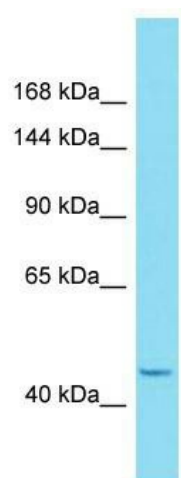
Product data:

Product Type:	Primary Antibodies
Applications:	WB
Recommended Dilution:	WB
Reactivity:	Human
Host:	Rabbit
Isotype:	IgG
Clonality:	Polyclonal
Immunogen:	The immunogen for Anti-HEATR6 antibody is: synthetic peptide directed towards the C-terminal region of Human HEATR6. Synthetic peptide located within the following region: YPTPLPQYDGRTPIKPQQSESSASRPTLNKKKSKVKPKKIQQGEEEEKE
Formulation:	Liquid. Purified antibody supplied in 1x PBS buffer with 0.09% (w/v) sodium azide and 2% sucrose. <i>Note that this product is shipped as lyophilized powder to China customers.</i>
Purification:	Affinity Purified
Conjugation:	Unconjugated
Storage:	Store at -20°C as received.
Stability:	Stable for 12 months from date of receipt.
Predicted Protein Size:	45 kDa
Gene Name:	HEAT repeat containing 6
Database Link:	NP_071353 Entrez Gene 63897 Human Q6AI08
Background:	The function of this protein remains unknown.
Synonyms:	ABC1
Note:	Immunogen Sequence Homology: Horse: 100%; Human: 100%; Rabbit: 92%; Pig: 86%; Guinea pig: 86%; Bovine: 85%; Dog: 79%; Rat: 77%



[View online »](#)

Product images:



Host: Rabbit; Target Name: HEATR6; Sample
Tissue: 721_B Whole Cell lysates; Antibody
Dilution: 1.0 ug/ml