

## Product datasheet for **TA337338**

### HDHD3 Rabbit Polyclonal Antibody

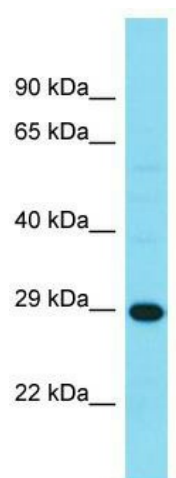
#### Product data:

Product Type:	Primary Antibodies
Applications:	WB
Recommended Dilution:	WB
Reactivity:	Human
Host:	Rabbit
Isotype:	IgG
Clonality:	Polyclonal
Immunogen:	The immunogen for Anti-HDHD3 antibody is: synthetic peptide directed towards the C-terminal region of Human HDHD3. Synthetic peptide located within the following region: AHVGDNYLCDYQGPRAVGMHSFLVVGQPALDPPVVRDSSVPKEHILPSLAHL
Formulation:	Liquid. Purified antibody supplied in 1x PBS buffer with 0.09% (w/v) sodium azide and 2% sucrose. <i>Note that this product is shipped as lyophilized powder to China customers.</i>
Purification:	Affinity Purified
Conjugation:	Unconjugated
Storage:	Store at -20°C as received.
Stability:	Stable for 12 months from date of receipt.
Predicted Protein Size:	27 kDa
Gene Name:	haloacid dehalogenase like hydrolase domain containing 3
Database Link:	<a href="#">NP_112496</a> <a href="#">Entrez Gene 81932 Human</a> <a href="#">Q9BSH5</a>
Background:	The function of this protein remains unknown.
Synonyms:	2810435D12Rik; C9orf158
Note:	Immunogen Sequence Homology: Human: 100%; Mouse: 100%; Rat: 93%; Rabbit: 93%; Horse: 86%; Pig: 79%; Bovine: 79%; Guinea pig: 79%



[View online »](#)

## Product images:



Host: Rabbit; Target Name: HDHD3; Sample  
Tissue: MCF7 Whole Cell lysates; Antibody  
Dilution: 1.0 ug/ml