

## Product datasheet for TA337337

### CEP27 (HAUS2) Rabbit Polyclonal Antibody

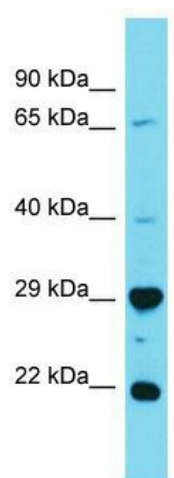
#### Product data:

Product Type:	Primary Antibodies
Applications:	WB
Recommended Dilution:	WB
Reactivity:	Human
Host:	Rabbit
Isotype:	IgG
Clonality:	Polyclonal
Immunogen:	The immunogen for Anti-HAUS2 antibody is: synthetic peptide directed towards the N-terminal region of Human HAUS2. Synthetic peptide located within the following region: AEIYQKNLEIELLKLEKDTADVHPFFLEMKSCYVAQAGLELMASILPFQ
Formulation:	Liquid. Purified antibody supplied in 1x PBS buffer with 0.09% (w/v) sodium azide and 2% sucrose. <i>Note that this product is shipped as lyophilized powder to China customers.</i>
Purification:	Affinity Purified
Conjugation:	Unconjugated
Storage:	Store at -20°C as received.
Stability:	Stable for 12 months from date of receipt.
Predicted Protein Size:	21 kDa
Gene Name:	HAUS augmin like complex subunit 2
Database Link:	<a href="#">NP_060567</a> <a href="#">Entrez Gene 55142 Human Q9NVX0</a>
Background:	The function of this protein remains unknown.
Synonyms:	C15orf25; CEP27; HsT17025
Note:	Immunogen Sequence Homology: Dog: 100%; Rat: 100%; Human: 100%; Rabbit: 93%; Mouse: 92%; Pig: 86%; Bovine: 86%; Guinea pig: 86%



[View online »](#)

## Product images:



Host: Rabbit; Target Name: HAUS2; Sample  
Tissue: 721\_B Whole Cell lysates; Antibody  
Dilution: 1.0 ug/ml