

Product datasheet for **TA337336**

CEP27 (HAUS2) Rabbit Polyclonal Antibody

Product data:

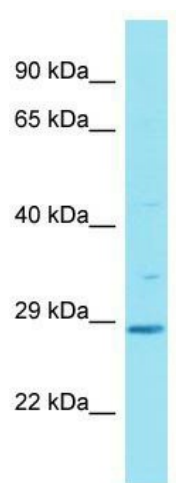
Product Type:	Primary Antibodies
Applications:	WB
Recommended Dilution:	WB
Reactivity:	Human
Host:	Rabbit
Isotype:	IgG
Clonality:	Polyclonal
Immunogen:	The immunogen for Anti-HAUS2 antibody is: synthetic peptide directed towards the C-terminal region of Human HAUS2. Synthetic peptide located within the following region: LAENILKWRKQNEVSSCIPKILAEESYLYKHDIIIMPPLPFTSKVHVQTI
Formulation:	Liquid. Purified antibody supplied in 1x PBS buffer with 0.09% (w/v) sodium azide and 2% sucrose. <i>Note that this product is shipped as lyophilized powder to China customers.</i>
Purification:	Affinity Purified
Conjugation:	Unconjugated
Storage:	Store at -20°C as received.
Stability:	Stable for 12 months from date of receipt.
Predicted Protein Size:	25 kDa
Gene Name:	HAUS augmin like complex subunit 2
Database Link:	NP_060567 Entrez Gene 55142 Human Q9NVX0
Background:	HAUS2 is 1 of 8 subunits of the 390-kD human augmin complex, or HAUS complex. The augmin complex was first identified in Drosophila, and its name comes from the Latin verb 'augmentare,' meaning 'to increase.' The augmin complex is a microtubule-binding complex involved in microtubule generation within the mitotic spindle and is vital to mitotic spindle assembly.
Synonyms:	C15orf25; CEP27; HsT17025



[View online »](#)

Note: Immunogen Sequence Homology: Human: 100%; Pig: 86%; Rabbit: 86%; Guinea pig: 82%; Dog: 79%; Bovine: 79%

Product images:



Host: Rabbit; Target Name: HAUS2; Sample Tissue: Fetal Liver lysates; Antibody Dilution: 1.0 ug/ml