

Product datasheet for **TA337335**

GUCY1A2 Rabbit Polyclonal Antibody

Product data:

Product Type:	Primary Antibodies
Applications:	WB
Recommended Dilution:	WB
Reactivity:	Human
Host:	Rabbit
Isotype:	IgG
Clonality:	Polyclonal
Immunogen:	The immunogen for Anti-GUCY1A2 antibody is: synthetic peptide directed towards the N-terminal region of Human GUCY1A2. Synthetic peptide located within the following region: KNFHNISNRCSYADHSNKEEIEDVSGILQCTANILGLKFEEIQKRFGEFF
Formulation:	Liquid. Purified antibody supplied in 1x PBS buffer with 0.09% (w/v) sodium azide and 2% sucrose. <i>Note that this product is shipped as lyophilized powder to China customers.</i>
Purification:	Affinity Purified
Conjugation:	Unconjugated
Storage:	Store at -20°C as received.
Stability:	Stable for 12 months from date of receipt.
Predicted Protein Size:	81 kDa
Gene Name:	guanylate cyclase 1, soluble, alpha 2
Database Link:	NP_001243353 Entrez Gene 2977 Human P33402
Background:	Soluble guanylate cyclases are heterodimeric proteins that catalyze the conversion of GTP to 3',5'-cyclic GMP and pyrophosphate. The protein encoded by this gene is an alpha subunit of this complex and it interacts with a beta subunit to form the guanylate cyclase enzyme, which is activated by nitric oxide. Two transcript variants encoding different isoforms have been found for this gene.
Synonyms:	GC-SA2; GUC1A2



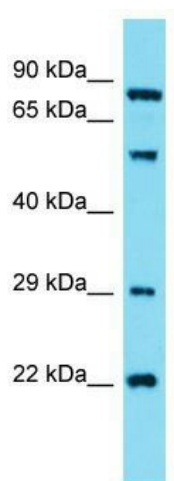
[View online »](#)

Note: Immunogen Sequence Homology: Rat: 100%; Horse: 100%; Human: 100%; Mouse: 100%; Zebrafish: 100%; Pig: 93%; Rabbit: 93%; Guinea pig: 93%; Bovine: 86%; Dog: 85%

Protein Families: Druggable Genome

Protein Pathways: Gap junction, Long-term depression, Purine metabolism, Vascular smooth muscle contraction

Product images:



Host: Rabbit; Target Name: GUCY1A2; Sample Tissue: HepG2 Whole Cell lysates; Antibody Dilution: 1.0 ug/ml