

## Product datasheet for TA337332

### GREB1 Rabbit Polyclonal Antibody

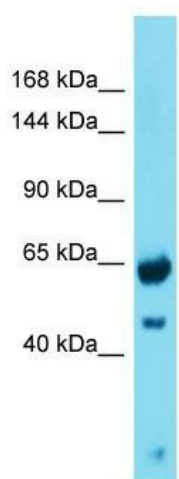
#### Product data:

Product Type:	Primary Antibodies
Applications:	WB
Recommended Dilution:	WB
Reactivity:	Human
Host:	Rabbit
Isotype:	IgG
Clonality:	Polyclonal
Immunogen:	The immunogen for Anti-GREB1 antibody is: synthetic peptide directed towards the N-terminal region of Human GREB1. Synthetic peptide located within the following region: LGFSGNCVGCCKGFCYFTEFSNHINLKLTTQPKKQKHLKYYLVRNAQGT
Formulation:	Liquid. Purified antibody supplied in 1x PBS buffer with 0.09% (w/v) sodium azide and 2% sucrose. <i>Note that this product is shipped as lyophilized powder to China customers.</i>
Purification:	Affinity Purified
Conjugation:	Unconjugated
Storage:	Store at -20°C as received.
Stability:	Stable for 12 months from date of receipt.
Predicted Protein Size:	48 kDa
Gene Name:	growth regulation by estrogen in breast cancer 1
Database Link:	<a href="#">NP_683701</a> <a href="#">Entrez Gene 9687 Human Q4ZG55</a>
Background:	This gene is an estrogen-responsive gene that is an early response gene in the estrogen receptor-regulated pathway. It is thought to play an important role in hormone-responsive tissues and cancer. Three alternatively spliced transcript variants encoding distinct isoforms have been found for this gene.
Synonyms:	KIAA0575


[View online »](#)

**Note:** Immunogen Sequence Homology: Dog: 100%; Pig: 100%; Rat: 100%; Horse: 100%; Human: 100%; Mouse: 100%; Bovine: 100%; Rabbit: 100%; Guinea pig: 100%; Zebrafish: 93%

## Product images:



Host: Rabbit; Target Name: GREB1; Sample Tissue: Fetal Heart lysates; Antibody Dilution: 1.0 ug/ml