

Product datasheet for **TA337330**

GPR180 Rabbit Polyclonal Antibody

Product data:

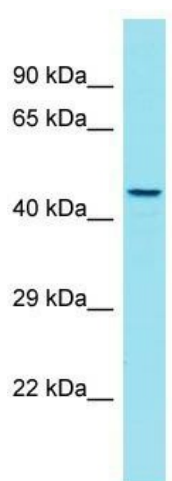
Product Type:	Primary Antibodies
Applications:	WB
Recommended Dilution:	WB
Reactivity:	Human
Host:	Rabbit
Isotype:	IgG
Clonality:	Polyclonal
Immunogen:	The immunogen for Anti-GPR180 antibody is: synthetic peptide directed towards the N-terminal region of Human GPR180. Synthetic peptide located within the following region: FQAQEWLKLQQSSHGYSCEKLSKAQLTMTMNQTEHNLTVSQIPSPQTDH
Formulation:	Liquid. Purified antibody supplied in 1x PBS buffer with 0.09% (w/v) sodium azide and 2% sucrose.
Purification:	Affinity Purified
Conjugation:	Unconjugated
Storage:	Store at -20°C as received.
Stability:	Stable for 12 months from date of receipt.
Predicted Protein Size:	48 kDa
Gene Name:	G protein-coupled receptor 180
Database Link:	NP_851320 Entrez Gene 160897 Human Q86V85
Background:	This gene encodes a protein that is a member of the G protein-coupled receptor superfamily. This protein is produced predominantly in vascular smooth muscle cells and may play an important role in the regulation of vascular remodeling.
Synonyms:	ITR
Note:	Immunogen Sequence Homology: Human: 100%; Bovine: 100%; Pig: 92%; Dog: 79%; Horse: 79%; Rabbit: 79%; Guinea pig: 79%



[View online »](#)

Protein Families: Druggable Genome, Transmembrane

Product images:



Host: Rabbit; Target Name: GPR180; Sample
Tissue: Jurkat Whole Cell lysates; Antibody
Dilution: 1.0 ug/ml